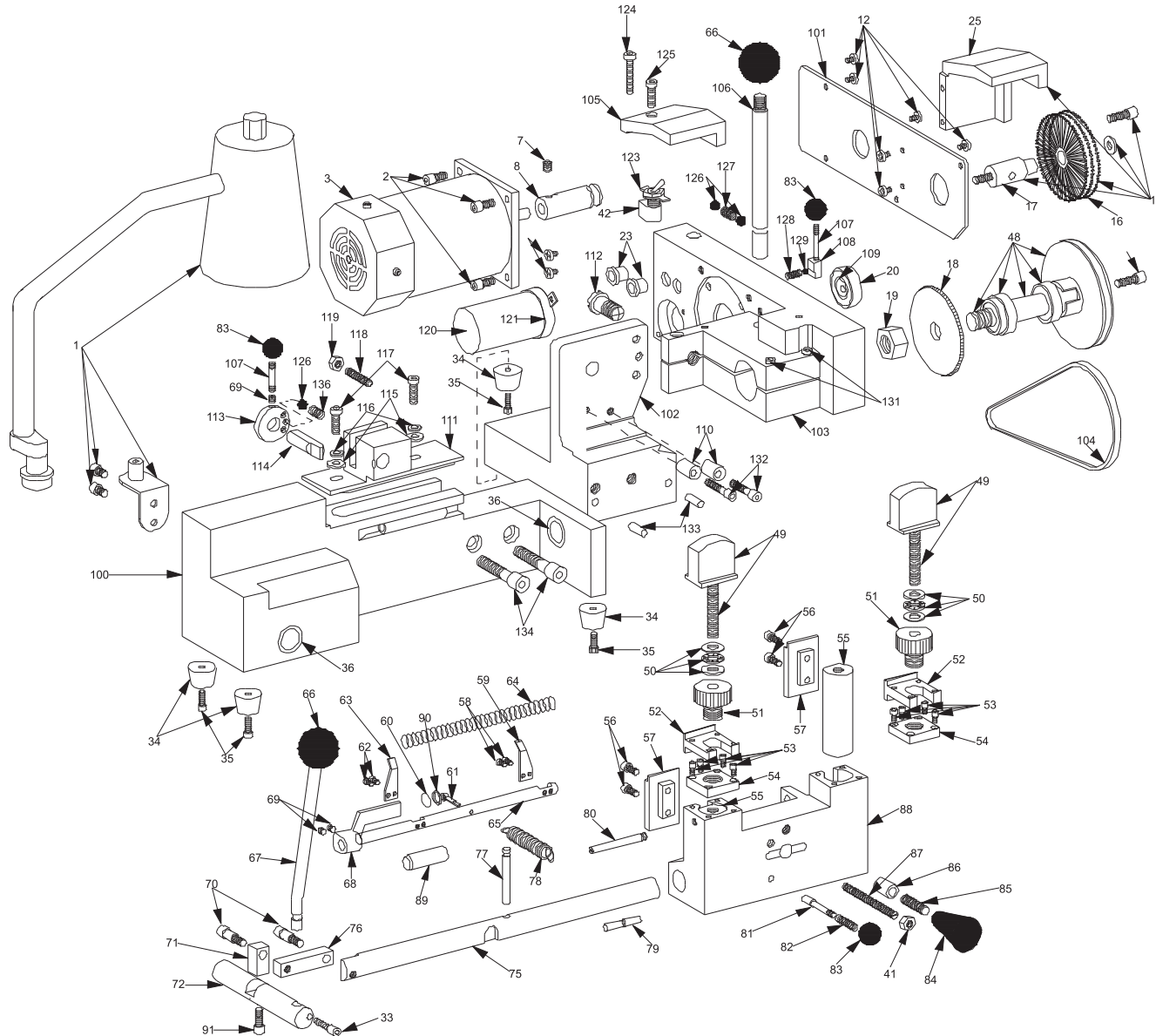


RY256 PARTS LIST

- 1- RY39 Lamp Kit
- 2- RY9069 Cap Screw
- 3- RY10038 A.C. Motor
- 7- RY9048 Set Screw
- 8- RY10037 Motor Pulley
- 12- RY9046 Philips Screw
- 15- RY101 Wire Brush Kit (optional)
- 16- RY9074 Replacement Wire Brush
- 17- RY10101 Arbor
- 18- RY10030 Replacement Cutter
- 19- RY10036 Cutter Hex Nut (Left Hand)
- 20- RY9037 Ball Bearing Assembly
- 23- RY9053 Strain Relief
- 25- RY10013 Guard.
- 34- RY9145 Rubber Foot
- 35- RY9058 Cap Screw
- 36- RY9024 Bronze Oilite™ Bearing
- 41- RY9055 Hex Jam Nut
- 42- RY9041 Switch
- 48- RY84 Ball Bearing Spindle Assembly
- 49- RY80 Key Vise Knob & Stud
- 50- RY82 3-Piece Thrust Bearing Assy.
- 51- RY10041 Top Jaw Clamp Knob
- 52- RY89 Top Vise Jaw
- 53- RY9063 Cap Screw
- 54- RY10045 Top Plate
- 55- RY10046 Vise Plunger
- 56- RY9062 Cap Screw
- 57- RY10047 Bottom Vise Jaw
- 58- RY9107 Slot Head Screw
- 59- RY10048 Key Gauge R.H.
- 60- RY9108 O-Ring
- 61- RY9279 Cotter Pin
- 62- RY9061 Cap Screw
- 63- RY10050 Key Gauge L.H.
- 64- RY10061 Key Gauge Spring
- 65- RY10049 Key Gauge Shaft
- 66- RY9027 Lever Knob
- 67- RY10018 Lever Shaft
- 68- RY114 Key Gauge Protector (optional)
- 69- RY9003 Set Screw
- 70- RY9059 Shoulder Screw
- 71- RY10020 Drive Link
- 72- RY10019 Drive Shaft
- 75- RY10022 Carriage Shaft
- 76- RY10021 Shaft Link
- 77- RY10026 Carriage Shaft Spring Pin
- 78- RY10025 Carriage Extension Spring
- 79- RY10027 Retaining Pin
- 80- RY10056 Key Ring Stud
- 81- RY10023 Carriage Release Stud
- 82- RY9025 Carriage Release Spring
- 83- RY9038 Carriage Release Knob
- 84- RY9028 Carriage Knob
- 85- RY10086 Threaded Stud
- 86- RY10060 Knob Spacer
- 87- RY10087 Carriage Over-Travel Adj. Screw
- 88- RY10011 Carriage
- 89- RY9278 Vinyl Cap
- 90- RY10067 Flat Washer
- 91- RY9047 Cap Screw
- 100- RY256266 Machine Housing
- 101- RY256267 Access Plate
- 102- RY256262 Base
- 103- RY256261 Motor Bracket
- 104- RY9085 Drive Belt
- 105- RY256265 Cutter Guard
- 106- RY256274 Head Release/Rotate Handle
- 107- RY256270 Threaded Stud
- 108- RY256271 Shaft Lock
- 109- RY256273 Idler Eccentric
- 110- RY256272 Eccentric Stop
- 112- RY256282 Pivot Stud
- 113- RY256277 Stylus Detent Plate
- 114- RY256276 Stylus



RY256 PARTS LIST(continued)

- 115- RY9106 Flat Washer
- 116- RY9073 Small Flat Washer
- 117- RY9084 Cap Screw
- 118- RY9060 Set Screw
- 119- RY9097 Hex Jam Nut
- 120- RY10039 Capacitor
- 121- RY10044 Capacitor Bracket
- 123- RY9087 Switch Plate
- 124- RY9042 Cap Screw
- 125- RY9069 Cap Screw
- 126- RY9083 Steel Ball
- 127- RY9089 Compression Spring
- 128- RY9081 Compression Spring
- 129- RY9088 Steel Ball
- 131- RY9042 Cap Screw
- 132- RY9047 Cap Screw
- 133- RY9265 Dowel Pin
- 134- RY9102 Cap Screw
- 136- RY9001 Compression Spring

PARTS NOT ILLUSTRATED

- RY9040 Power Cord
RY9051 Wire Nut

REPLACEMENT REPAIR KITS

- RY81 Key Gauge Assembly
RY82 Key Vise Thrust Bearing Kit
RY83 Carriage Drive Linkage Kit
RY84 Ball Bearing Spindle Assembly
RY85 Carriage Spring Assembly
RY86 Carriage Release Assembly

OPTIONAL ACCESSORIES

- RY39 Lamp Kit
RY88 12 Volt D.C. Motor
RY99 12 Volt D.C. Wiring Kit
RY10088 D.C. Motor Adapter
RY100104 Instruction Manual